



THETA
ENTERPRISES, INC.

NEWSLETTER

©2006 Theta Enterprises, Inc.

July 2006

Published by:

John G. Svinos, President

Theta Enterprises, Inc.
1211 W. Imperial Hwy.
Suite 105
Brea, CA 92821-3724 USA

Phone# (714) 526-8878
Fax# (714) 526-8875

Electronic Mail:

jsvinos@gotheta.com
Internet Home Page:
<http://www.gotheta.com>
or <http://www.xspoc.com>

RODSTAR-D and RODSTAR-V Now Available

We have just released two new versions of RODSTAR that replace the existing single version.

RODSTAR-D is a deviated well version that can be used to simulate rod pumping systems for deviated wells. RODSTAR-V is an updated version of the last release of the RODSTAR program with the same new interface and output improvements as RODSTAR-D. RODSTAR-V is for near-vertical wells only. RODSTAR-V has all the features and calculation algorithms of the traditional RODSTAR program but with several improvements in the output reports and user interface.

We have also released new versions of RODDIAG and XDIAG. The new RODDIAG version now has the same interface as XDIAG which has also been improved and it's pattern

recognition database expanded.

Licensing Information

If you are a RODSTAR user now, and your technical support is in effect (you paid your yearly technical support fees) you will be able to download both RODSTAR-D and RODSTAR-V at no charge.

From now on however (effective July 17), you can purchase licenses for either RODSTAR-D, or RODSTAR-V. The cost for the RODSTAR-V license remains the same at \$4,745.00 per license. RODSTAR-D licenses will be \$5,745.00 each. However, the RODSTAR-D license will also provide you with RODSTAR-V at no additional charge. If you only license RODSTAR-V, you obviously **will not get** RODSTAR-D.

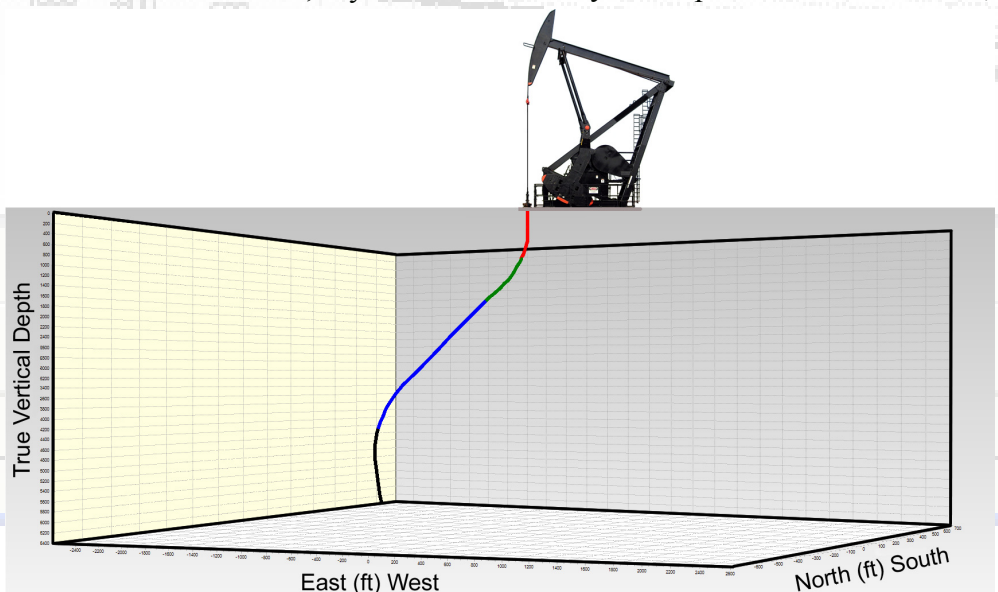
Download Information

If you have a download ID for RODSTAR, you can use it to download RODSTAR-V. However, if you want

to download RODSTAR -D please email Rudy Nesmith at: rudy@gotheta.com and request to enable you to download RODSTAR-D, or Call 714-526-8878. Please include your sentinel serial number in your email so we can check your technical support status. For more information on licensing cost, software leasing, or yearly technical support cost, please consult our web site at : www.gotheta.com. Then click on "Prices and Ordering."

RODSTAR-D Capabilities and Improvements

- RODSTAR-D makes it very easy to enter a deviation survey. You can import an Excel file with the deviation survey, you can scan a deviation survey on paper (you need a scanner and OCR software), or you can type the data in manually.
- It uses the most sophisticated mathematical modeling for improved accuracy in the prediction of rod loads,



side loads, gearbox loads, etc.

- Just like RODSTAR-V, you can enter a target production or IRP data and have RODSTAR-D automatically calculate the pumping speed, plunger size, rod string design, pumping unit size and motor size you need.

- With RODSTAR-D's powerful batch run capability you can run as many files as you want overnight or during lunch and the program will automatically summarize the results in an Excel spreadsheet, and if you have Excel on your computer, it will automatically display the results in a summary spreadsheet in Excel itself automatically.

- RODSTAR-D has an improved output report that looks the same on-screen as on the printout. All deviation plots are on one page as shown in Figure 1. The summary report of all the calculated numbers are also on one page. The rod guide recommendation portion of the report shows only where guides are needed. This minimizes the paper you get from each run and makes it much easier to find what you are looking for on the output.

- After the deviation survey is entered, you can see a 3-D plot of the wellbore, spin it around to look at different views, zoom in, etc. The program shows the sections in the rod string in different colors.

- RODSTAR-D support emailing us cases you have questions about. The toolbar has an email icon that automatically launches your email software and attaches the file in question to the email message.

- RODSTAR-D support running more than one instance of the program at a time. This is very convenient for comparing different runs for the same well, compare different system designs, etc.

The above list is only a partial list of new options and new capabilities

of RODSTAR-D.

RODSTAR-V Features

RODSTAR-V shares all the interface improvements of RODSTAR-D discussed above but does not have the deviation input window and is only for near-straight wellbores. Even though RODSTAR-D can be used for straight wells, we recommend using RODSTAR-V for these wells. The main reason for this is execution time. RODSTAR-V runs very fast as compared to RODSTAR-D. This is because RODSTAR-D uses a much more sophisticated and therefore more time intensive mathematical simulation of rod pumping systems.

Upcoming Rod Pumping Optimization Courses

- Bakersfield CA: August 21-25 (full)
- Midland, TX: September 11-15
- Calgary, AB: September 25-28

The Bakersfield course is now full but some openings are still available for the Midland and Calgary courses. Please visit our web site at: www.gotheta.com for more information or to sign up online. Or, you can call Sandy at our Brea office at 714-526-8878.

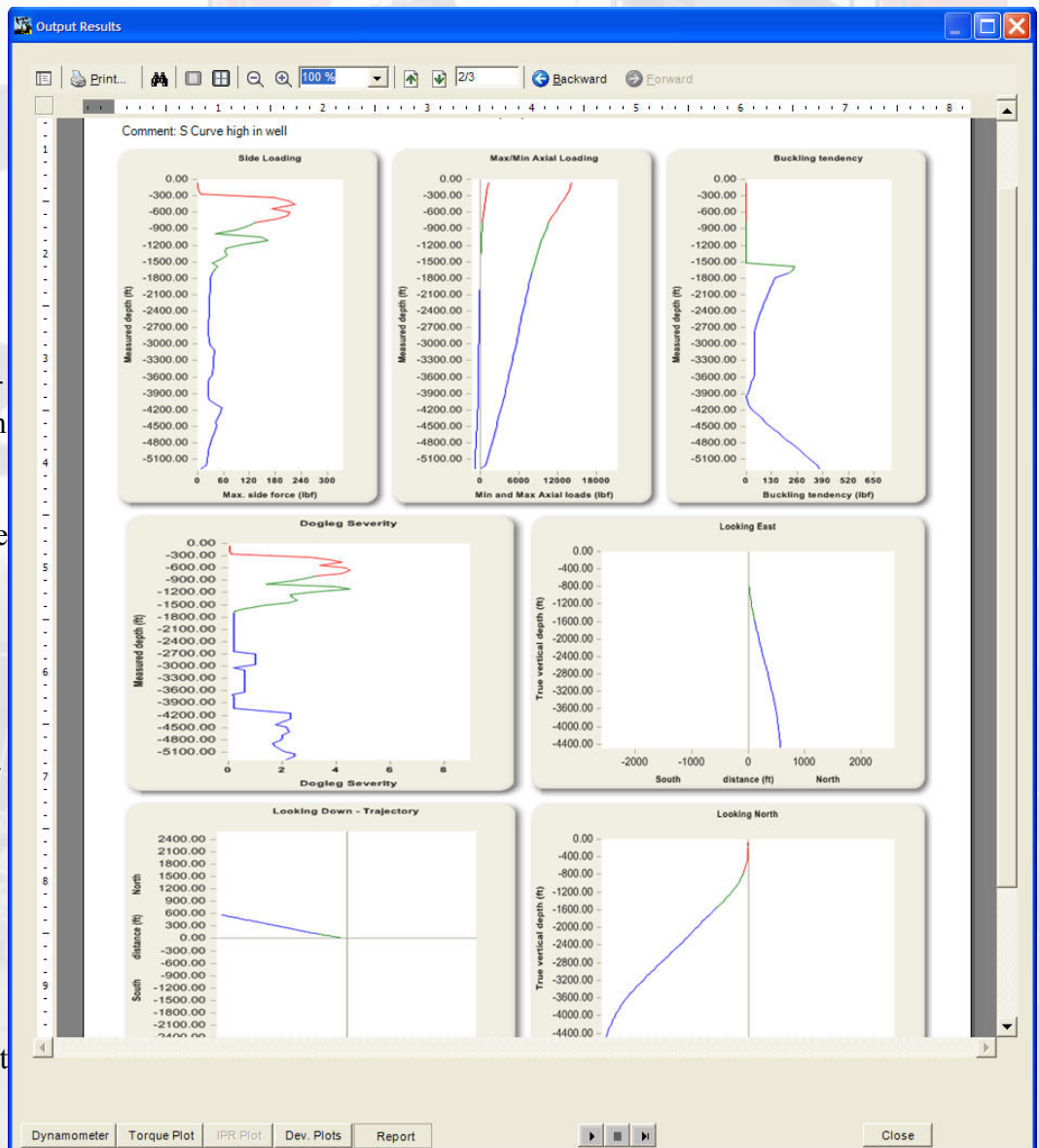


Figure 1: Summary deviation plot page